





Belmont Street Residence

Architect: David Boyle

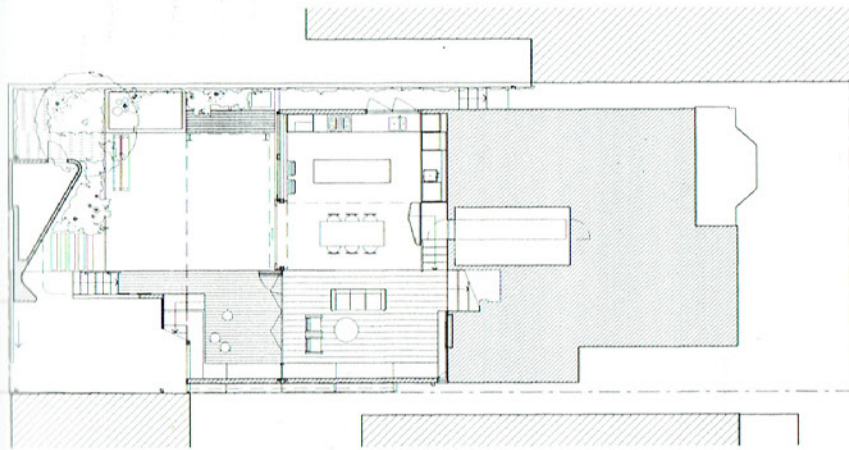
Location: Alexandria, Australia

Date of construction: 2004

Photography: Murray Fredericks

A new extension to an existing house provides an intimate courtyard and a series of platforms for living, dining, and entertaining that interact on different levels with the main courtyard space. Bold architectural elements and a liberal use of color create a dialogue of interconnecting spaces.





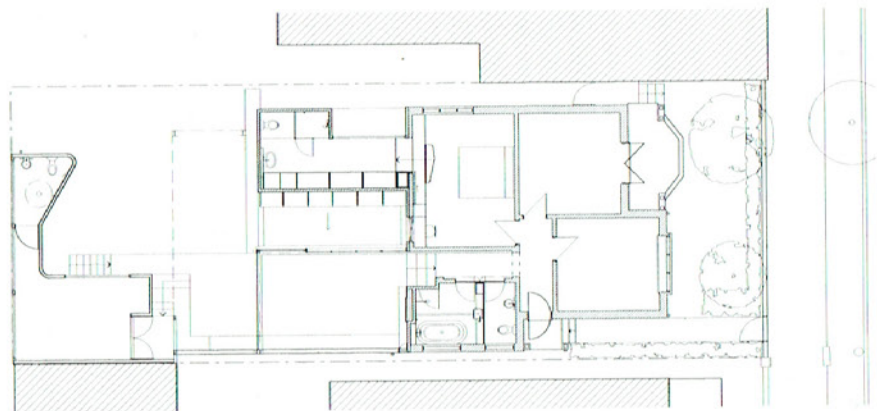
Lower Ground Floor

5
A U-shaped building footprint that partially encloses the rear courtyard was developed to control the visual and environmental climate of the extension.



6

The stepped floor levels of the new work take advantage of the sloping site and ensure a direct relationship with the exterior.



Upper Ground Floor





7

Glazing was maximized in order to minimize the reliance on artificial light during the day. The glazing is sufficiently protected with overhanging eaves or roofs to allow solar penetration in winter months and protection from unwanted heat during the summer.

